

## COVID-19 Monthly Report - June 2020

All data submitted to SHR by 16 July 2020

Number of landlords issued with returns  
Number of landlords who submitted returns

171
171

Annual comparison figures are derived from data provided to us by the landlords in the Annual Return on the Charter and from the Scottish Government's published statistics on homelessness.

Links:

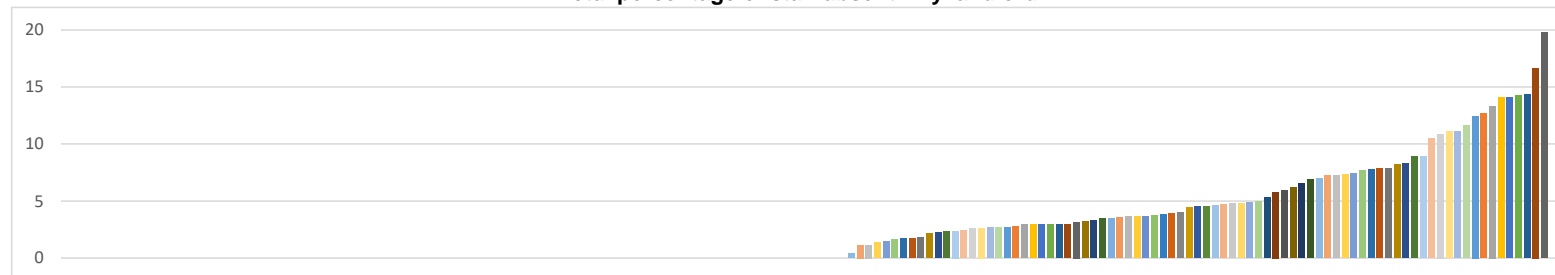
[Annual Return on the Charter \(ARC\)](#)

[Scottish Government's published statistics on homelessness.](#)

### Staff (RSL only)

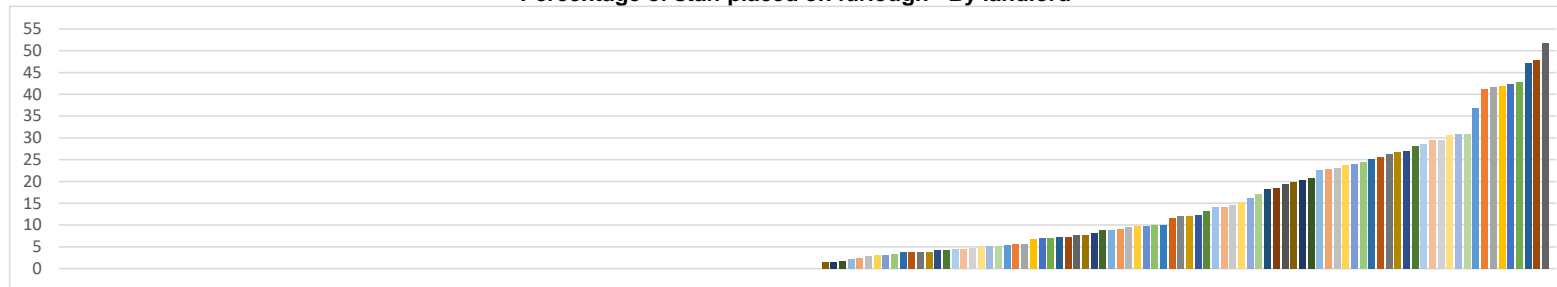
		<i>Change from Previous Month(+/-)</i>
Total number of staff absent	449	-30
Lowest staff absence (%)	0.00%	0.00%
Highest staff absence (%)	19.75%	+1.23%
Total % staff absent	3.39%	-0.25%

Total percentage of staff absent - By landlord



		<b>Change from Previous Month(+/-)</b>
Number of staff placed on furlough	1,597	-206
Lowest % of staff placed on furlough	0.00%	0.00%
Highest % of staff placed on furlough	51.67%	-16.76%
% of staff placed on furlough	12.07%	-0.02%

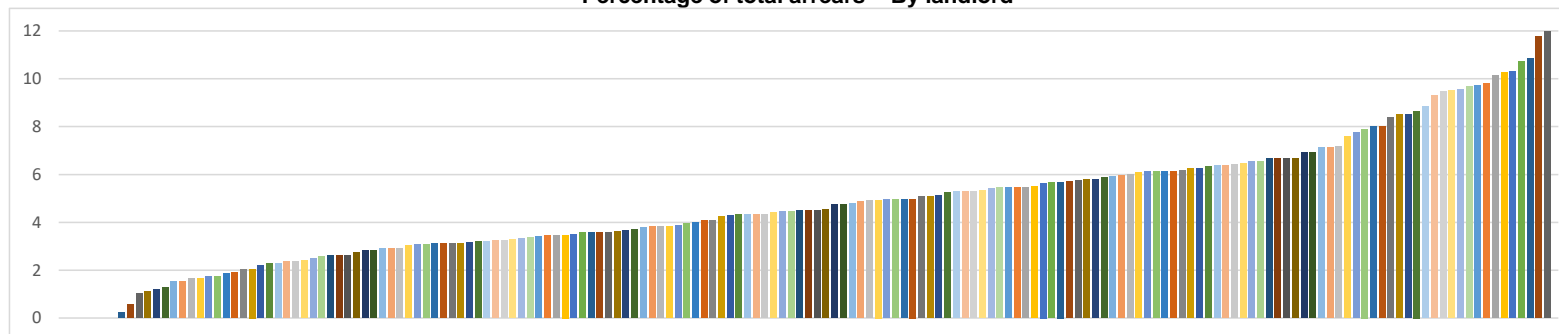
**Percentage of staff placed on furlough - By landlord**



## Rent Arrears

	<b>RSL</b>	<b>Change from Previous Month(+/-)</b>	<b>Local Authority</b>	<b>Change from Previous Month(+/-)</b>	<b>Combined</b>	<b>Change from Previous Month(+/-)</b>	<b>At end March 2019</b>
Total arrears (£)	£64,098,156	+£625,386	£96,088,679	+£2,902,845	£160,186,835	+£3,528,232	£137,328,386
Lowest landlord arrears (%)	0.24%	+0.03%	3.58%	+3.55%			
Highest landlord arrears (%)	10.85%	+0.29%	11.96%	+11.82%			
Total landlord arrears (%)	4.67%	+0.05%	7.88%	+0.23%	6.18%	+0.14%	5.72%

**Percentage of total arrears - By landlord**



## Empty Homes

	<u>RSL</u>	<i>Change from Previous Month(+/-)</i>	<u>Local Authority</u>	<i>Change from Previous Month(+/-)</i>	<u>Combined</u>	<i>Change from Previous Month(+/-)</i>	<u>During 2018/19</u>
Total number arising in month	1,204	+228	1,179	+318	2,383	+546	50,462
Total number at end of month	4,606	+353	4,797	+698	9,403	+1051	6,167

## Lets

	<u>RSL</u>	<i>Change from Previous Month(+/-)</i>	<u>Local Authority</u>	<i>Change from Previous Month(+/-)</i>	<u>Combined</u>	<i>Change from Previous Month(+/-)</i>	<u>During 2018/19</u>
Total number in month*	862	+411	1,130	+560	1,992	+971	56,193
Total number to homeless (SST)	288	+151	596	+204	884	+355	19,629
Total number to homeless (short SST)	14	+13	3	-1	17	+12	
Total number leased to LA (RSL only)	163	-53					
Total number used for temporary accomodation (LA only)**			447	N/A			
Total number of lets to others	293	N/A	278	N/A	571	N/A	

\*For some landlords the breakdown of lets does not equal the total number of lets – we will work with landlords to further improve the reporting guidance for this information

\*\*Figures first collected in June Return

## Court Actions\*

	<u>RSL</u>	<i>Change from Previous Month(+/-)</i>	<u>Local Authority</u>	<i>Change from Previous Month(+/-)</i>	<u>Combined</u>	<i>Change from Previous Month(+/-)</i>	<u>During 2018/19</u>
Total number of court actions initiated	30	N/A	0	N/A	30	N/A	11,577
Properties recovered having obtained decree for non-payment of rent	0	N/A	0	N/A	0	N/A	2,134
Properties recovered having obtained decree for anti-social behaviour	0	N/A	0	N/A	0	N/A	127
Properties recovered having obtained decree for other reasons	1	N/A	0	N/A	1	N/A	34

\*Figures first collected in June Return

## Notice of Proceedings\*

	<u>RSL</u>	<i>Change from Previous Month(+/-)</i>	<u>Local Authority</u>	<i>Change from Previous Month(+/-)</i>	<u>Combined</u>	<i>Change from Previous Month(+/-)</i>
Rent arrears	141	N/A	104	N/A	245	N/A
Anti-social behaviour / criminal activity	27	N/A	6	N/A	33	N/A
Other reasons	6	N/A	3	N/A	9	N/A

\*Figures first collected in June Return

## Homelessness (LA only)

		<i>Change from Previous Month(+/-)</i>		
Total number of homeless applications received in the month	2,923	+449	9,236	01 April to 30 June 2019
Total number of households offered and accepted temporary accommodation in the month	3,268	+418		
Total number of households offered and refused temporary accommodation in the month	624	+156		
Total number of households not offered temporary accommodation when needed in the month	58	+20	865*	01 April to 30 June 2019
Total number of households in temporary accommodation on the last day of the month	13,875	+935	11,079	At 30 June 2019

\*Number of instances where a household has not been offered temporary accommodation during 1 April 2019 to 30 June 2019. A household can have multiple instances.

Landlords provide us with the information for the dashboard each month, and we amend the data when landlords notify us of corrections. Given this, figures may differ from those previously published.

## Monthly Figures

Number of Returns						
	April	May	June	July	August	September
Number of landlords issued with returns	171	171	171			
Number of landlords who submitted returns	171	171	171			

Staff (RSL only)						
	April	May	June	July	August	September
Total number of staff absent	666	479	449			
Lowest staff absence (%)	0.00%	0.00%	0.00%			
Highest staff absence (%)	30.00%	18.52%	19.75%			
Total % staff absent	0.05%	0.04%	0.03%			
Number of staff placed on furlough	1,641	1,803	1,597			
Lowest % of staff placed on furlough	0.00%	0.00%	0.00%			
Highest % of staff placed on furlough	68.43%	68.43%	51.67%			
% of staff placed on furlough	12.46%	13.70%	12.07%			

Rent Arrears - RSL						
	April	May	June	July	August	September
Total arrears (£)	£61,501,669	£63,472,770	£64,098,156			
Lowest landlord arrears (%)	0.00%	0.21%	0.24%			
Highest landlord arrears (%)	11.28%	10.56%	10.85%			
Total landlord arrears (%)	4.51%	4.62%	4.67%			

<b>Rent Arrears - Local Authority</b>						
	<b>April</b>	<b>May</b>	<b>June</b>	<b>July</b>	<b>August</b>	<b>September</b>
Total arrears (£)	£87,122,231	£93,185,834	£96,088,679			
Lowest landlord arrears (%)	2.55%	3.90%	3.58%			
Highest landlord arrears (%)	14.04%	13.08%	11.96%			
Total landlord arrears (%)	7.17%	7.64%	7.88%			

<b>Rent Arrears - Combined</b>						
	<b>April</b>	<b>May</b>	<b>June</b>	<b>July</b>	<b>August</b>	<b>September</b>
Total arrears (£)	£148,623,900	£156,658,604	£160,186,835			
Total landlord arrears (%)	5.76%	6.04%	6.18%			

<b>Empty Homes - RSL</b>						
	<b>April</b>	<b>May</b>	<b>June</b>	<b>July</b>	<b>August</b>	<b>September</b>
Total number arising in month	1,233	976	1,204			
Total number at end of month	3,833	4,253	4,606			

<b>Empty Homes - Local Authority</b>						
	<b>April</b>	<b>May</b>	<b>June</b>	<b>July</b>	<b>August</b>	<b>September</b>
Total number arising in month	891	861	1,179			
Total number at end of month	4,490	4,099	4,797			

<b>Empty Homes - Combined</b>						
	<b>April</b>	<b>May</b>	<b>June</b>	<b>July</b>	<b>August</b>	<b>September</b>
Total number arising in month	2,124	1,837	2,383			
Total number at end of month	8,323	8,352	9,403			

Lets - RSL						
	April	May	June	July	August	September
Total number in month	332	451	862			
Total number to homeless (SST)	77	137	288			
Total number to homeless (short SST)	3	1	14			
Total number leased to LA	216	203	163			
Total number of lets to others*	N/A	N/A	293			

\*Figures first collected in June Return

Lets - Local Authority						
	April	May	June	July	August	September
Total number in month	415	570	1,130			
Total number to homeless (SST)	308	392	596			
Total number to homeless (short SST)	7	4	3			
Total number used for temporary accomodation*	N/A	N/A	447			
Total number of lets to others*	N/A	N/A	278			

\*Figures first collected in June Return

Lets - Combined						
	April	May	June	July	August	September
Total number in month	747	1,021	1,992			
Total number to homeless (SST)	385	529	884			
Total number to homeless (short SST)	10	5	17			
Total number of lets to others*	N/A	N/A	571			

\*Figures first collected in June Return

<b>Court Actions - RSL*</b>						
	<b>April</b>	<b>May</b>	<b>June</b>	<b>July</b>	<b>August</b>	<b>September</b>
Total number of court actions initiated	N/A	N/A	30			
The number of properties recovered having obtained decree for non-payment of rent	N/A	N/A	0			
The number of properties recovered having obtained decree for anti-social behaviour	N/A	N/A	0			
The number of properties recovered having obtained decree for other reasons	N/A	N/A	1			

\*Figures first collected in June Return

<b>Court Actions - LA*</b>						
	<b>April</b>	<b>May</b>	<b>June</b>	<b>July</b>	<b>August</b>	<b>September</b>
Total number of court action initiated	N/A	N/A	0			
The number of properties recovered having obtained decree for non-payment of rent	N/A	N/A	0			
The number of properties recovered having obtained decree for anti-social behaviour	N/A	N/A	0			
The number of properties recovered having obtained decree for other reasons	N/A	N/A	0			

\*Figures first collected in June Return

<b>Court Actions - Combined*</b>						
	<b>April</b>	<b>May</b>	<b>June</b>	<b>July</b>	<b>August</b>	<b>September</b>
Total number of court action initiated	N/A	N/A	30			
The number of properties recovered having obtained decree for non-payment of rent	N/A	N/A	0			
The number of properties recovered having obtained decree for anti-social behaviour	N/A	N/A	0			
The number of properties recovered having obtained decree for other reasons	N/A	N/A	1			

\*Figures first collected in June Return



Notice of proceedings - RSL*						
	April	May	June	July	August	September
Rent arrears	N/A	N/A	141			
Anti-social behaviour / criminal activity	N/A	N/A	27			
Other reasons	N/A	N/A	6			

\*Figures first collected in June Return

Notice of proceedings - Local Authority*						
	April	May	June	July	August	September
Rent arrears	N/A	N/A	104			
Antisocial behaviour / criminal activity	N/A	N/A	6			
Other reasons	N/A	N/A	3			

\*Figures first collected in June Return

Notice of proceedings - Combined*						
	April	May	June	July	August	September
Rent arrears	N/A	N/A	245			
Antisocial behaviour / criminal activity	N/A	N/A	33			
Other reasons	N/A	N/A	9			

\*Figures first collected in June Return

Homelessness (LA only)						
	April	May	June	July	August	September
Total number of homeless applications received in the month	2,293	2,474	2,923			
Total number of households offered and accepted temporary accommodation in the month	2,853	2,850	3,268			
Total number of households offered and refused temporary accommodation in the month	401	468	624			
Total number of households not offered temporary accommodation when needed in the month	8	38	58			
Total number of households in temporary accommodation on the last day of the month	12,261	12,940	13,875			

## Definitions

Total number of staff (FTE)	Permanent or temporary staff employed by the RSL or by any of its subsidiaries as at 31 March each year which carry out duties for the RSL. The number of staff should be reported in terms of full-time equivalents (FTE). For example, if the hours of two people working part-time are added together that might be the same as one full-time job.
Total number absent (FTE)	Number of staff (FTE) not available to work, because of ill-health, care responsibilities, compassionate leave, other reasons (excluding those placed on furlough)
Percentage of staff absent	To calculate the percentage we will divide the total number absent (FTE) by the total number of staff (FTE) and multiply by 100.
Number of staff placed on furlough (FTE)	Number of staff place on furlough in accordance with the UK Government's furlough scheme
Gross rent arrears	Gross rent arrears consists of the value (to the nearest £) of current and former tenant rent arrears as at the end of each month or the closest end of debit period prior to any arrears write-off. Rent paid in advance should not be used to offset the overall value.
Total rent due	Total rent due is the value (to the nearest £) of the total annual charges levied by the landlord in respect of rent and service charges for dwellings.
Gross rent arrears (%)	To calculate the percentage we will divide the total value of gross rent arrears by the total rent due for the year and multiply by 100.
Empty Homes	The number of empty dwellings that arose during the last month in self-contained lettable stock. A void is a property owned by a landlord which has no tenant and it is held on the Income and Expenditure
Empty homes (last day of month)	The total number of empty dwellings in self-contained lettable stock on the last day of the reporting month.
Total lets	Total number of new tenancies commenced during the reporting month.
Lets to homeless (SST)	Total number of lets during the reporting month to households assessed as statutory homeless by the local authority and to whom the LA has a duty to provide permanent housing.
Lets to homeless (short SST)	Total number of lets during the reporting month to households assessed as statutory homeless by the local authority and to whom the LA has a duty to provide permanent housing.
Leased to relevant local authority	Number of properties leased during the reporting month to the local authority
Number of homeless applications received in the month	Total number of homelessness applications taken by the local authority under the homeless persons legislation in the reporting month.

Number of households offered and accepted temporary accommodation* in the month	This part of the return corresponds with the Scottish Government's HL3 return (the monitoring of households placed in temporary accommodation as part of local authorities' duties under the homeless persons' legislation). The Scottish Government's "guidance on how to complete the HL3 return" definitions should be applied when supplying this information. Local authorities should provide the relevant information monthly.	<a href="#">Link</a>
Number of households offered and refused temporary accommodation* in the month	This part of the return corresponds with the Scottish Government's HL3 return (the monitoring of households placed in temporary accommodation as part of local authorities' duties under the homeless persons' legislation). The Scottish Government's "guidance on how to complete the HL3 return" definitions should be applied when supplying this information. Local authorities should provide the relevant information monthly.	<a href="#">Link</a>
Number of households not offered temporary accommodation* when needed in the month	This part of the return corresponds with the Scottish Government's HL3 return (the monitoring of households placed in temporary accommodation as part of local authorities' duties under the homeless persons' legislation). The Scottish Government's "guidance on how to complete the HL3 return" definitions should be applied when supplying this information. Local authorities should provide the relevant information monthly.	<a href="#">Link</a>
Total number of households in temporary accommodation on the last day of the month*	This part of the return corresponds with the Scottish Government's HL2 return (the monitoring of households placed in temporary accommodation as part of local authorities' duties under the homeless persons' legislation). The Scottish Government's "guidance on how to complete the HL2 return" definitions should be applied when supplying this information. Local authorities should provide the relevant information monthly.	<a href="#">Link</a>

\* households placed in temporary accommodation as part of local authorities' duties under the homeless persons' legislation

