

## COVID-19 Monthly Report - May 2020

All data submitted to SHR by 15 June 2020

Number of landlords issued with returns  
Number of landlords who submitted returns

171
171

Annual comparison figures are derived from data provided to us by the landlords in the Annual Return on the Charter and from the Scottish Government's published statistics on homelessness.

Links:

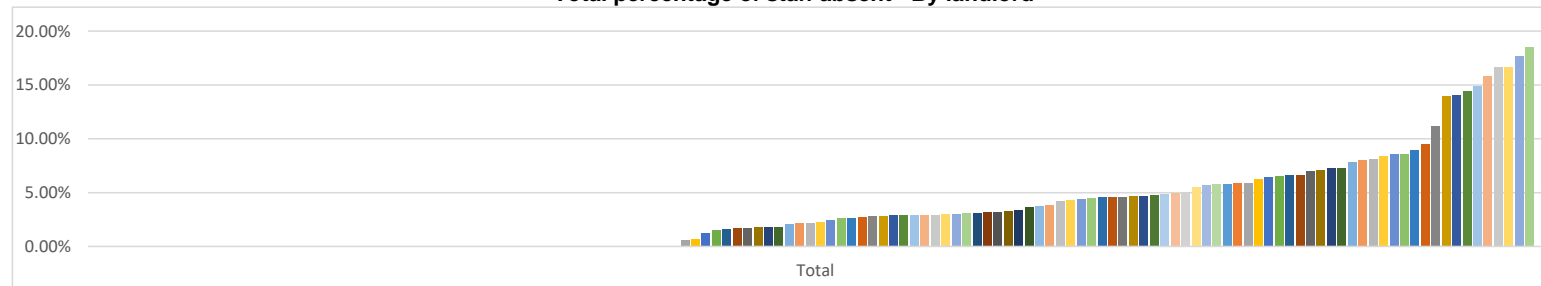
[Annual Return on the Charter \(ARC\)](#)

[Scottish Government's published statistics on homelessness.](#)

### Staff (RSL only)

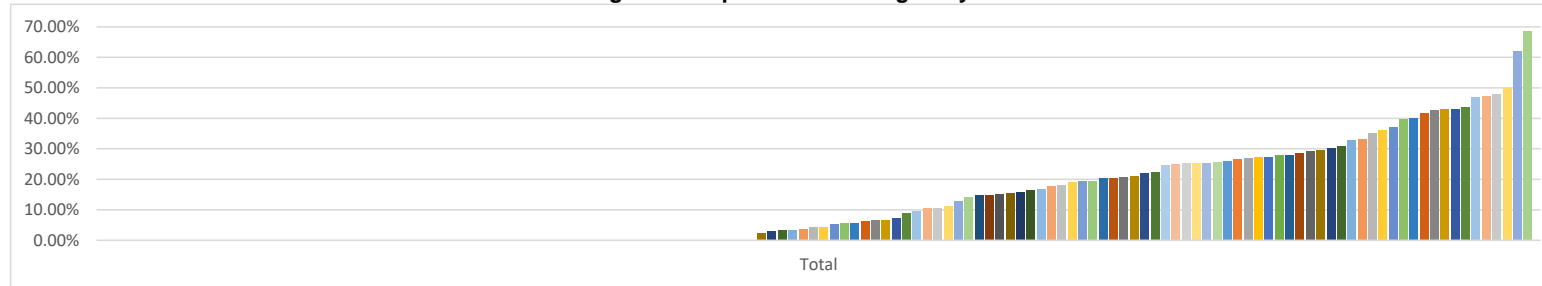
	<i>Change from Previous Month(+/-)</i>	
Total number of staff absent	479	-186
Lowest staff absence (%)	0.00%	0.00%
Highest staff absence (%)	18.52%	-11.48%
Total % staff absent	3.65%	-1.41%

Total percentage of staff absent - By landlord



		<b>Change from Previous Month(+/-)</b>
Number of staff placed on furlough	1,787	+153
Lowest % of staff placed on furlough	0.00%	0.00%
Highest % of staff placed on furlough	68.43%	0.00%
% of staff placed on furlough	13.62%	+1.19%

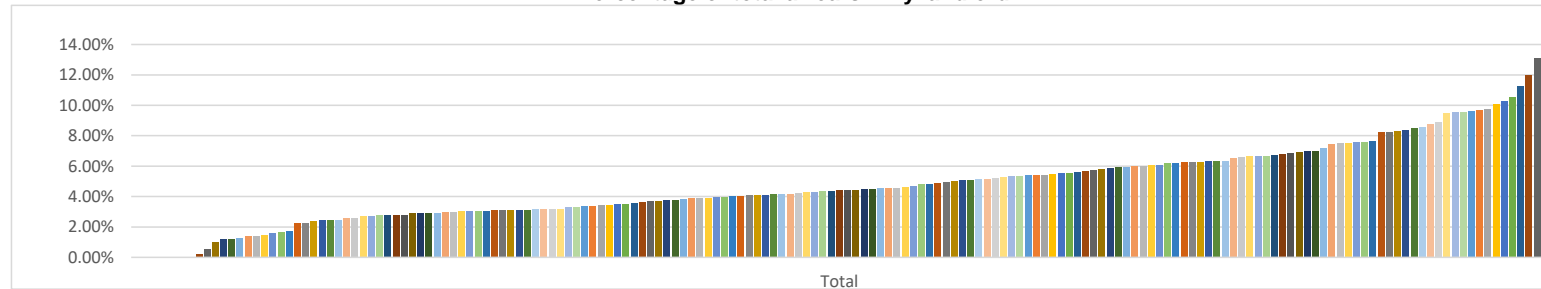
**Percentage of staff placed on furlough - By landlord**



## Rent Arrears

	<b>RSL</b>	<b>Change from Previous Month(+/-)</b>	<b>Local Authority</b>	<b>Change from Previous Month(+/-)</b>	<b>Combined</b>	<b>Change from Previous Month(+/-)</b>	<b>At end March 2019</b>
Total arrears (£)	£63,119,999	+£2,308,978	£93,347,134	+£6,224,902	£156,467,133	+£8,533,880	£137,328,386
Lowest landlord arrears (%)	0.00%	0.00%	3.90%	+1.35%			
Highest landlord arrears (%)	10.56%	-0.72%	13.08%	-0.95%			
Total landlord arrears (%)	4.63%	+0.14%	7.66%	+0.48%	6.06%	+0.30%	5.72%

**Percentage of total arrears - By landlord**



## Empty Homes

	<u>RSL</u>	<u>Change from Previous Month(+/-)</u>	<u>Local Authority</u>	<u>Change from Previous Month(+/-)</u>	<u>Combined</u>	<u>Change from Previous Month(+/-)</u>	<u>During 2018/19</u>
Total number arising in month	934	-251	889	+7	1,823	-244	50,462
Total number at end of month	4,155	+412	4,404	-53	8,559	+359	6,167

## Lets

	<u>RSL</u>	<u>Change from Previous Month(+/-)</u>	<u>Local Authority</u>	<u>Change from Previous Month(+/-)</u>	<u>Combined</u>	<u>Change from Previous Month(+/-)</u>	<u>During 2018/19</u>
Total number in month	473	+141	577	+162	1,050	+303	56,193
Total number to homeless (SST)	137	+60	398	+90	535	+150	19,629
Total number to homeless (short SST)	1	-2	4	-3	5	-5	
Total number leased to LA	201	-15					

## Homelessness (LA only)

		<u>Change from Previous Month(+/-)</u>		
Total number of homeless applications received in the month	2,552	+259	9,236	01 April to 30 June 2019
Total number of households offered and accepted temporary accommodation in the month	2,951	+98		
Total number of households offered and refused temporary accommodation in the month	469	+68		
Total number of households not offered temporary accommodation when needed in the month	38	+30	865*	01 April to 30 June 2019
Total number of households in temporary accommodation on the last day of the month	13,175	+914	11,079	At 30 June 2019

\*Number of instances where a household has not been offered temporary accommodation during 1 April 2019 to 30 June 2019. A household can have multiple instances.

## Monthly Figures

Number of Returns						
	April	May	June	July	August	September
Number of landlords issued with returns	171	171				
Number of landlords who submitted returns	171	171				

Staff (RSL only)						
	April	May	June	July	August	September
Total number of staff absent	664	479				
Lowest staff absence (%)	0.00%	0.00%				
Highest staff absence (%)	30.00%	18.52%				
Total % staff absent	5.06%	3.65%				
Number of staff placed on furlough	1,633	1,787				
Lowest % of staff placed on furlough	0.00%	0.00%				
Highest % of staff placed on furlough	68.43%	68.43%				
% of staff placed on furlough	12.44%	13.62%				

Rent Arrears - RSL						
	April	May	June	July	August	September
Total arrears (£)	£60,811,021	£63,119,999				
Lowest landlord arrears (%)	0.00%	0.00%				
Highest landlord arrears (%)	11.28%	10.56%				
Total landlord arrears (%)	4.49%	4.63%				

<b>Rent Arrears - Local Authority</b>						
	<b>April</b>	<b>May</b>	<b>June</b>	<b>July</b>	<b>August</b>	<b>September</b>
Total arrears (£)	£87,122,231	£93,347,134				
Lowest landlord arrears (%)	2.55%	3.90%				
Highest landlord arrears (%)	14.04%	13.08%				
Total landlord arrears (%)	7.17%	7.66%				

<b>Rent Arrears - Combined</b>						
	<b>April</b>	<b>May</b>	<b>June</b>	<b>July</b>	<b>August</b>	<b>September</b>
Total arrears (£)	£147,933,253	£156,467,133				
Total landlord arrears (%)	5.76%	6.06%				

<b>Empty Homes - RSL</b>						
	<b>April</b>	<b>May</b>	<b>June</b>	<b>July</b>	<b>August</b>	<b>September</b>
Total number arising in month	1,185	934				
Total number at end of month	3,743	4,155				

<b>Empty Homes - Local Authority</b>						
	<b>April</b>	<b>May</b>	<b>June</b>	<b>July</b>	<b>August</b>	<b>September</b>
Total number arising in month	882	889				
Total number at end of month	4,457	4,404				

<b>Empty Homes - Combined</b>						
	<b>April</b>	<b>May</b>	<b>June</b>	<b>July</b>	<b>August</b>	<b>September</b>
Total number arising in month	2,067	1,823				
Total number at end of month	8,200	8,559				

<b>Lets - RSL</b>						
	<b>April</b>	<b>May</b>	<b>June</b>	<b>July</b>	<b>August</b>	<b>September</b>
Total number in month	332	473				
Total number to homeless (SST)	77	137				
Total number to homeless (short SST)	3	1				
Total number leased to LA	216	201				

<b>Lets - Local Authority</b>						
	<b>April</b>	<b>May</b>	<b>June</b>	<b>July</b>	<b>August</b>	<b>September</b>
Total number in month	415	577				
Total number to homeless (SST)	308	398				
Total number to homeless (short SST)	7	4				

<b>Lets - Combined</b>						
	<b>April</b>	<b>May</b>	<b>June</b>	<b>July</b>	<b>August</b>	<b>September</b>
Total number in month	747	1,050				
Total number to homeless (SST)	385	535				
Total number to homeless (short SST)	10	5				

<b>Homelessness (LA only)</b>						
	<b>April</b>	<b>May</b>	<b>June</b>	<b>July</b>	<b>August</b>	<b>September</b>
Total number of homeless applications received in the month	2,293	2,552				
Total number of households offered and accepted temporary accommodation in the month	2,853	2,951				
Total number of households offered and refused temporary accommodation in the month	401	469				
Total number of households not offered temporary accommodation when needed in the month	8	38				
Total number of households in temporary accommodation on the last day of the month	12,261	13,175				

## Definitions

Total number of staff (FTE)	Permanent or temporary staff employed by the RSL or by any of its subsidiaries as at 31 March each year which carry out duties for the RSL. The number of staff should be reported in terms of full-time equivalents (FTE). For example, if the hours of two people working part-time are added together that might be the same as one full-time job.
Total number absent (FTE)	Number of staff (FTE) not available to work, because of ill-health, care responsibilities, compassionate leave, other reasons (excluding those placed on furlough)
Percentage of staff absent	To calculate the percentage we will divide the total number absent (FTE) by the total number of staff (FTE) and multiply by 100.
Number of staff placed on furlough (FTE)	Number of staff place on furlough in accordance with the UK Government's furlough scheme
Gross rent arrears	Gross rent arrears consists of the value (to the nearest £) of current and former tenant rent arrears as at the end of each month or the closest end of debit period prior to any arrears write-off. Rent paid in advance should not be used to offset the overall value.
Total rent due	Total rent due is the value (to the nearest £) of the total annual charges levied by the landlord in respect of rent and service charges for dwellings.
Gross rent arrears (%)	To calculate the percentage we will divide the total value of gross rent arrears by the total rent due for the year and multiply by 100.
Empty Homes	The number of empty dwellings that arose during the last month in self-contained lettable stock. A void is a property owned by a landlord which has no tenant and it is held on the Income and Expenditure
Empty homes (last day of month)	The total number of empty dwellings in self-contained lettable stock on the last day of the reporting month.
Total lets	Total number of new tenancies commenced during the reporting month.
Lets to homeless (SST)	Total number of lets during the reporting month to households assessed as statutory homeless by the local authority and to whom the LA has a duty to provide permanent housing.
Lets to homeless (short SST)	Total number of lets during the reporting month to households assessed as statutory homeless by the local authority and to whom the LA has a duty to provide permanent housing.
Leased to relevant local authority	Number of properties leased during the reporting month to the local authority
Number of homeless applications received in the month	Total number of homelessness applications taken by the local authority under the homeless persons legislation in the reporting month.

Number of households offered and accepted temporary accommodation* in the month	This part of the return corresponds with the Scottish Government's HL3 return (the monitoring of households placed in temporary accommodation as part of local authorities' duties under the homeless persons' legislation). The Scottish Government's "guidance on how to complete the HL3 return" definitions should be applied when supplying this information. Local authorities should provide the relevant information monthly.	<a href="#">Link</a>
Number of households offered and refused temporary accommodation* in the month	This part of the return corresponds with the Scottish Government's HL3 return (the monitoring of households placed in temporary accommodation as part of local authorities' duties under the homeless persons' legislation). The Scottish Government's "guidance on how to complete the HL3 return" definitions should be applied when supplying this information. Local authorities should provide the relevant information monthly.	<a href="#">Link</a>
Number of households not offered temporary accommodation* when needed in the month	This part of the return corresponds with the Scottish Government's HL3 return (the monitoring of households placed in temporary accommodation as part of local authorities' duties under the homeless persons' legislation). The Scottish Government's "guidance on how to complete the HL3 return" definitions should be applied when supplying this information. Local authorities should provide the relevant information monthly.	<a href="#">Link</a>
Total number of households in temporary accommodation on the last day of the month*	This part of the return corresponds with the Scottish Government's HL2 return (the monitoring of households placed in temporary accommodation as part of local authorities' duties under the homeless persons' legislation). The Scottish Government's "guidance on how to complete the HL2 return" definitions should be applied when supplying this information. Local authorities should provide the relevant information monthly.	<a href="#">Link</a>

\* households placed in temporary accommodation as part of local authorities' duties under the homeless persons' legislation

